

Instructions for TigerView Integration

MouthWatch cameras easily integrate with TigerView imaging software. Use the MouthWatch camera to capture images of the patient and store them directly into the patient record.

Step 1 – Download the Button Capture Software

- Go to: www.mymouthwatch.com/support and download our Button Capture Software.
- View the installation guide
- Install the program, following all steps in the guide
- Select TigerView from the Button Capture Software menu

Step 2 – Plug in the MouthWatch Camera

Make sure that you plug the USB connector into a powered USB port. Sometimes, these are located on the front or back of the computer. If your monitor has USB ports, these may not be powered.

Step 3 – Windows Recognizes the Camera

Once the MouthWatch camera is plugged in, you should see a small alert on the bottom saying that New Hardware “USB Video Device” was recognized.

Step 4 – Launch TigerView Administration

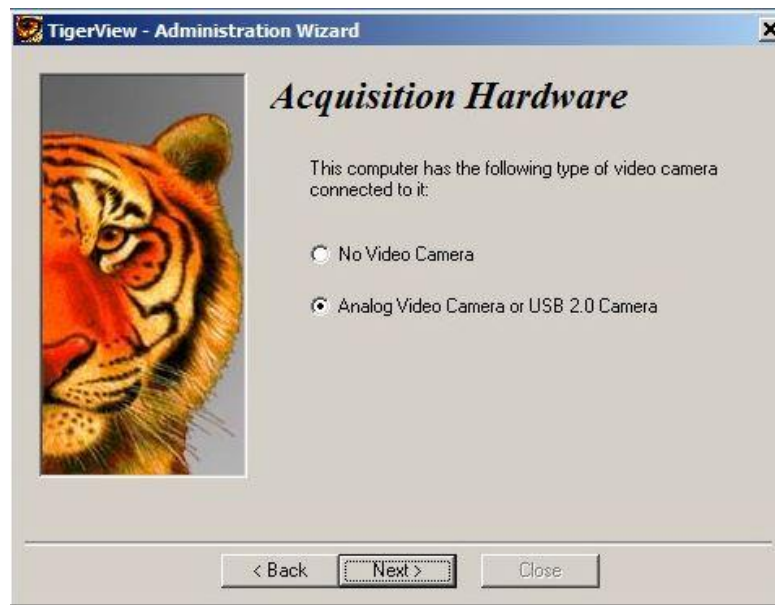
Open the TigerView Administration program from the TigerView folder in your Start Menu

Step 5 – Configure Acquisition Hardware

When you launch the Administration program, you will start on this screen:



- Select “Acquisition Hardware Configuration”
- Click “Next”

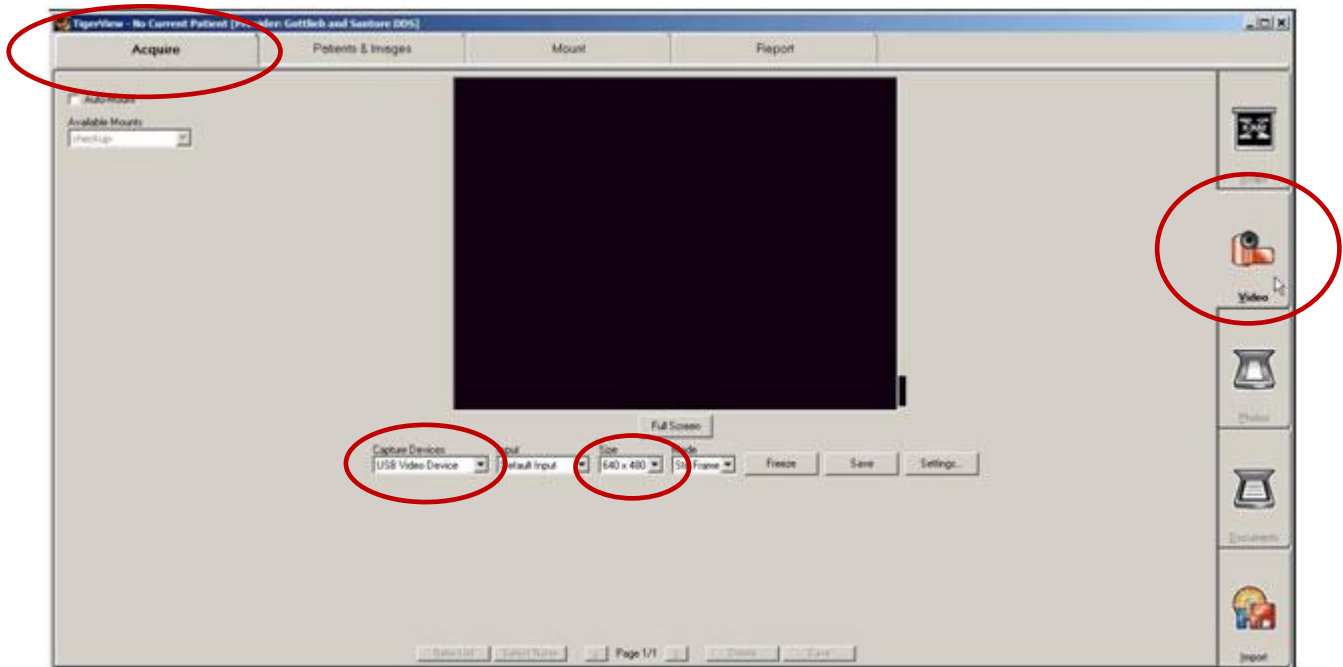


- Select “Video Capture”
- Click “Finish”

Step 6 – Take Intraoral Photos

- Select the patient record

- Then, click on the “Acquire” tab
- Then, select “Video”



- Make sure the Capture Device is set to “USB Video Device”
- Make sure Size is set to 640x480

Step 6 – All Set!

As you click the capture button on the MouthWatch camera, thumbnails will appear along the bottom. Select which you want to save and then click “Save.”

Make sure the MouthWatch Capture Button software running in the system tray and set to TigerView.