

## Instructions for CADI Integration

MouthWatch cameras easily integrate with EVAsoft Imaging software. Use the MouthWatch camera to capture images of the patient and store them directly into the patient record.

### Step 1 – No Need for Button Capture Software

- Ignore the instruction card with your camera and do not download the Button Capture Software

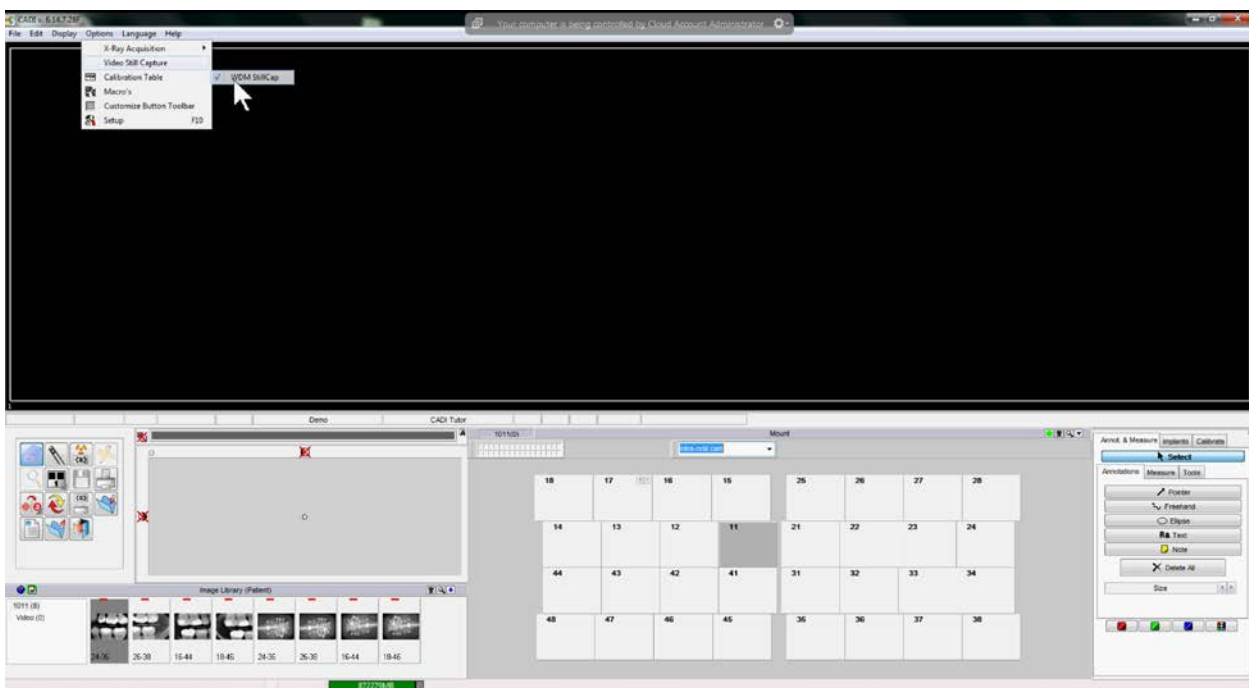
### Step 2 – Plug in the MouthWatch Camera

Make sure that you plug the USB connector into a powered USB port. Sometimes, these are located on the front or back of the computer. If your monitor has USB ports, these may not be powered.

### Step 3 – Windows Recognizes the Camera

Once the MouthWatch camera is plugged in, you should see a small alert on the bottom saying that New Hardware “USB Video Device” was recognized.

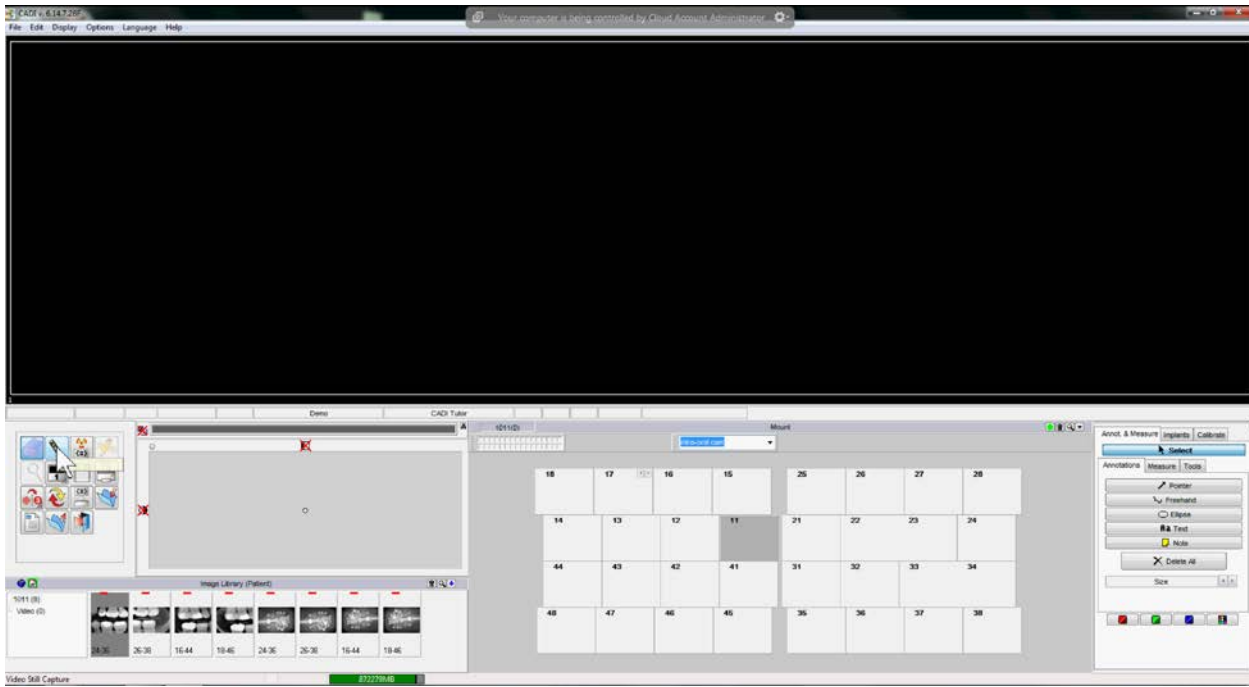
### Step 4 – Select Video Still Capture



Confirm WDM StillCap is selected under Options>Video Still Capture

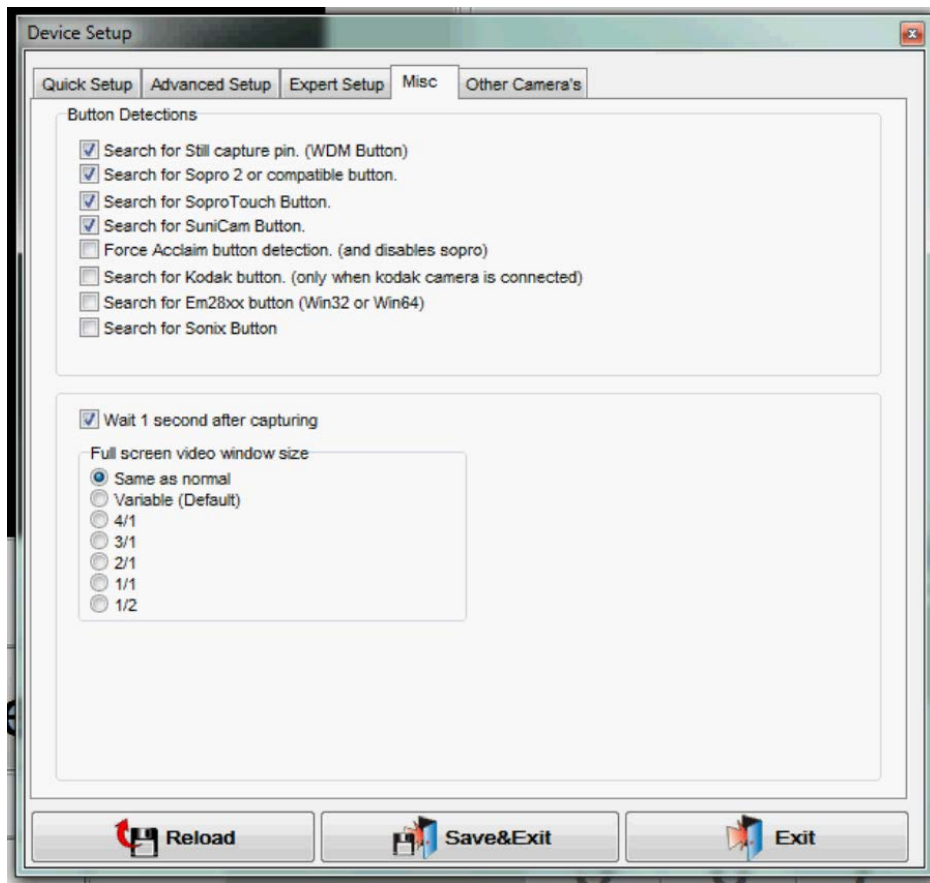
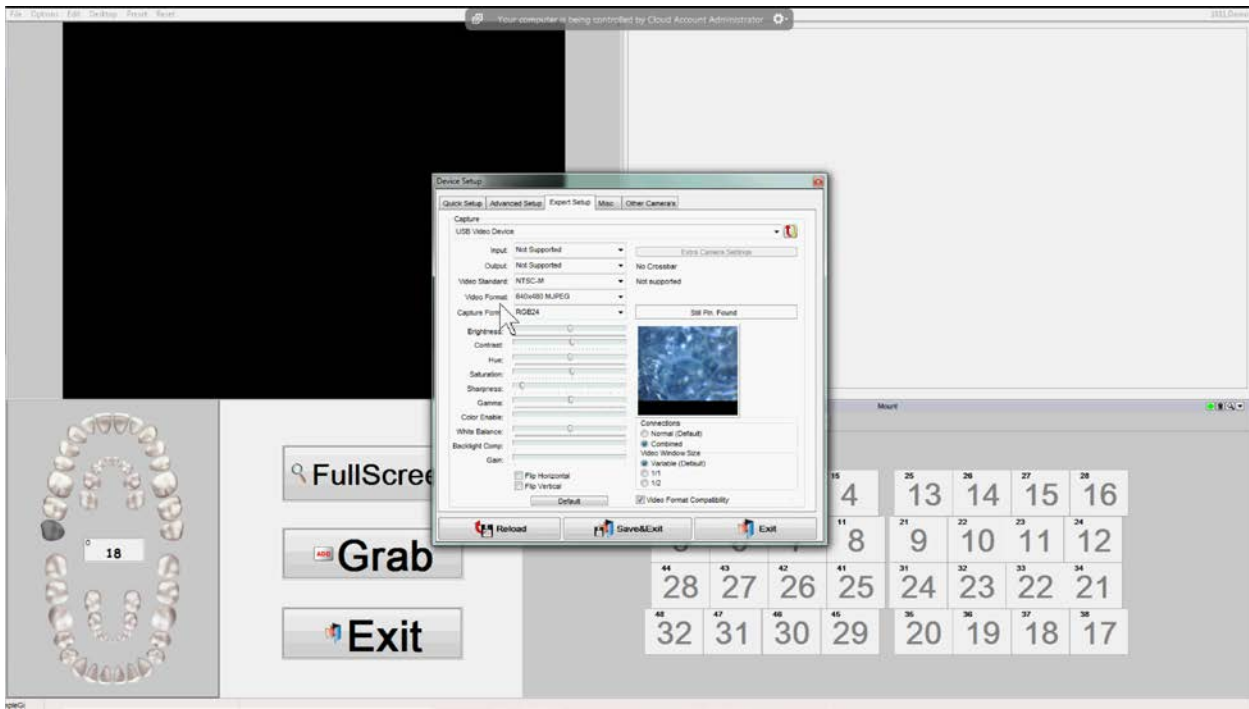
## Step 5 – Click on the Video Capture icon

- In the button bar of CADI, select the Intraoral Camera Icon



## Step 6 – Configure Device

- Select Options>Device Setup from the menu bar
- Confirm the following settings are selected in the Device Setup window
- Make sure the Video Format Compatibility has been checked
- On the Misc. tab, make sure the WDM Still Capture Pin option is checked
- Save & Exit



## **Step 7 – View Video Stream and Capture**

- Once configured, the video feed will display and pressing the capture button will take snapshots and save the images to the patient chart.

## **Step 7 – All Set!**